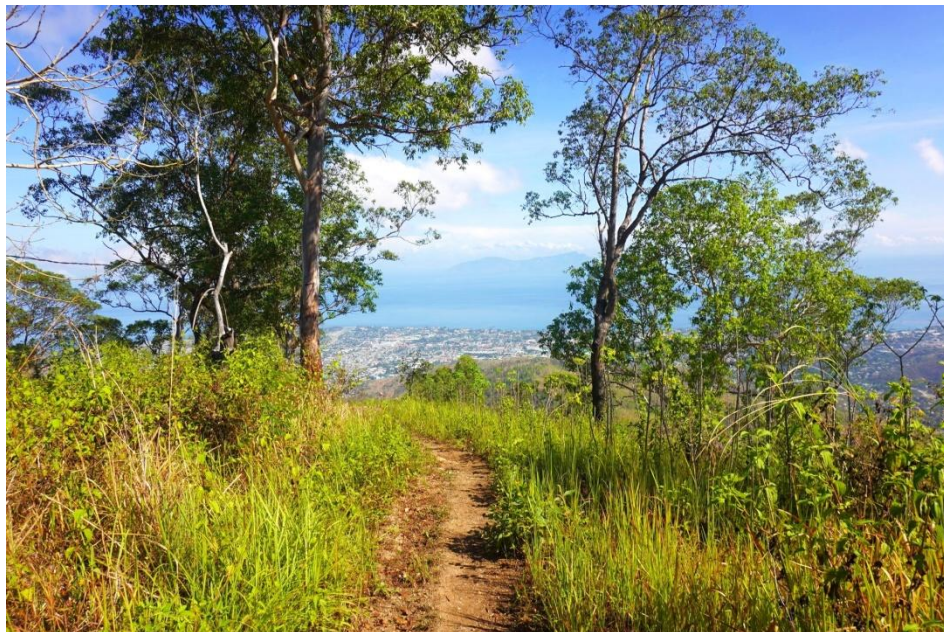
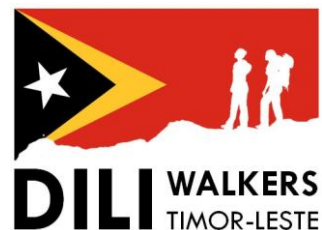


# Double Ridge Hike



**Comoro**

[Route map](#)

**10/10 difficulty**

**4 hours**

**9.4km up 672m**

[Video](#)

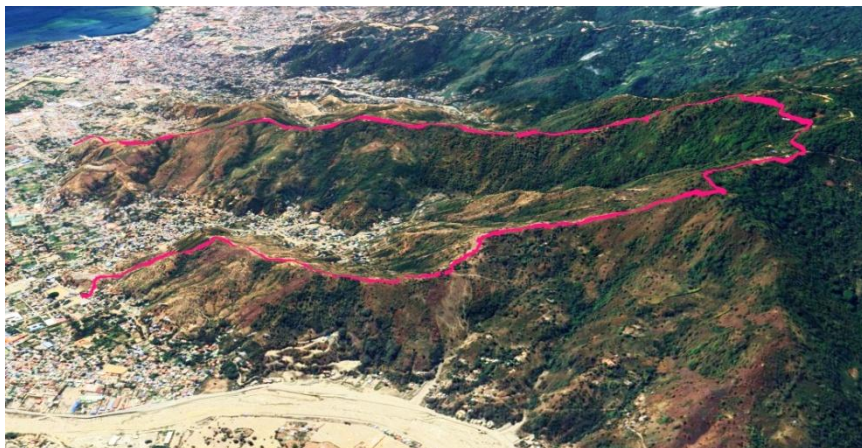
One of the most challenging group hikes, this starts up the Uma Lulik route, and just keeps going! Reach a highpoint of 767m above sea level, before a long, but less steep descent which overlaps (in the opposite direction) with parts of the Kakaulidun Loop and Mt Fatocama Loop walks. It is a big hike, but the views of the city are stunning, and almost ever present the whole way.

**Difficulty rationale** – the walk is downhill initially, mainly on narrow paths, but there are some steeper uneven sections. This is very slippery when wet and shoes with good grip are required and poles are highly recommended.

Meet at [Lisbutak Chapel](#)

**Microlet 5**

**Walk from start, finish  
2.3km away, catch #5**



[Click above links](#)